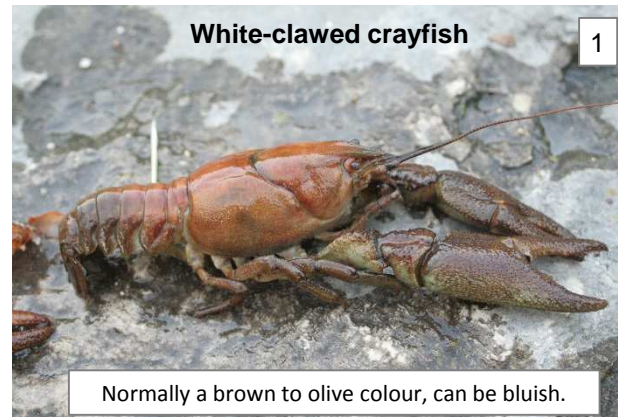
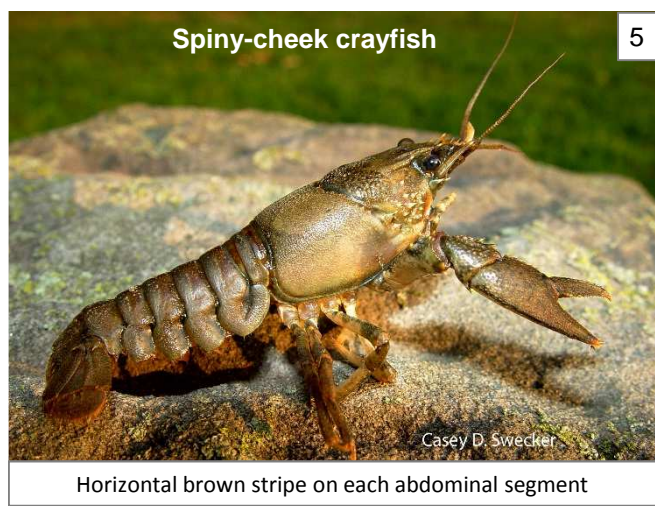
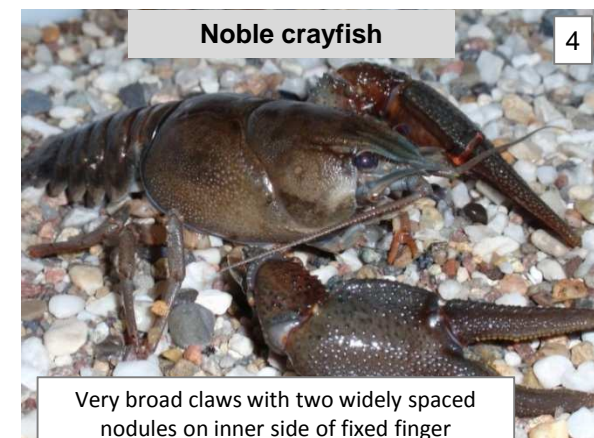
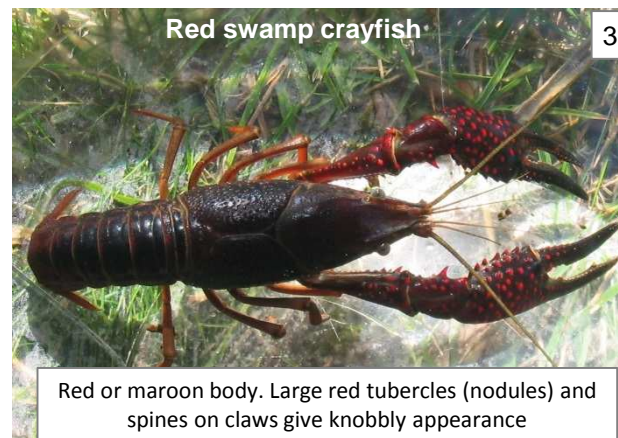
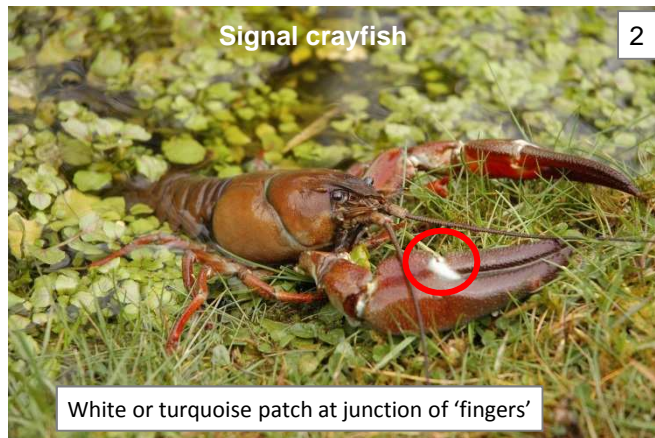


Identification tips for the native White-clawed crayfish and some **non-native** crayfish species  
 (Body colour can be very variable)



**Photo credits:**

1. D. Gerke
2. Trevor Renals
3. I. Duloup\_CC-BY-SA-3.0
4. [www.uni-kiel.de/zoologie/limnologie/](http://www.uni-kiel.de/zoologie/limnologie/)
5. Casey D. Swecker
6. Crown Copyright 2009
7. www.rakipolskie.pl



Report sightings: <http://invasivespeciesireland.com/alien-watch/>  
 or by E-mail: [invasives@biodiversityireland.ie](mailto:invasives@biodiversityireland.ie)

Identification tips on the claws of the **native** White-clawed crayfish and some **non-native** crayfish species  
 (Underside of claws shown in the photos)

**White-clawed crayfish**



Whitish underside of claws, NEVER red

**Photo credits:**

1. NPWS Manual No. 45
2. GBNNS Crown Copyright 2009
3. Trevor Renals
4. Copyright Jens Keicher
5. Crown Copyright 2009
6. (c) Rian Vestors Natuurfotografie
7. © Michal Mañas. [BioLib.cz](http://BioLib.cz)

**Signal crayfish**



Underside of claws are red © NNSS

**Turkish crayfish**



Fingers of claws are long, straight and narrow

**Spiny-cheek crayfish**



Underside tip of claws are orange with a black band below

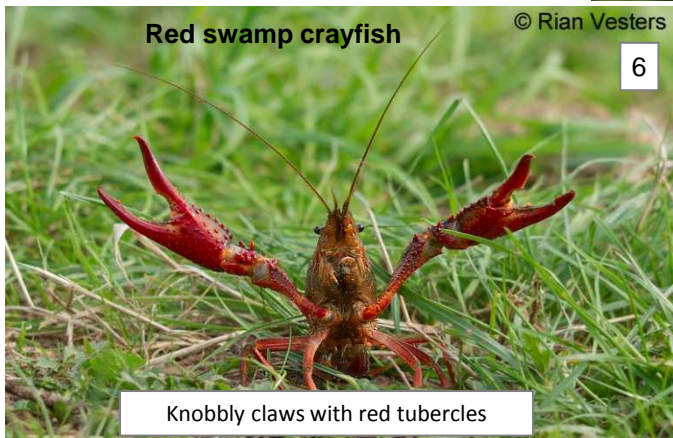
**Marbled crayfish**



Blue with marbled pattern

**Red swamp crayfish**

© Rian Vestors



Knobby claws with red tubercles

**Noble crayfish**



Caws very broad, reddish-brown underneath and with widely spaced nodules on the inner side of the fixed finger

Report sightings: <http://invasivespeciesireland.com/alien-watch/>  
 or by E-mail: [invasives@biodiversityireland.ie](mailto:invasives@biodiversityireland.ie)